



SEPARATE AND EQUAL

Video Design

DISCLAIMER

The play *Separate And Equal* is an intense, racially-charged play involving multiple acts of race-based violence and language.

As such, the materials utilized in the production, from inspiration to final product, are sensitive, graphic, and offensive by their very nature.

Viewer discretion is advised.

THE PLAY

- An interracial pickup basketball game in 1951 Birmingham becomes a stylized movement proxy for race relations history.
- Each drive stands as a metaphor for slavery, emancipation, sharecropping, voting rights, poll taxes, Jim Crow, and so on.
- Each player represents a position archetype based on legendary ballers: Professor, Enforcer, Trickster, Answer, Messiah, and Mascot.



THE CHALLENGES

- A complete production design (set, props, lights, sound, video, TD, ME, AE, VE).
- 75 seats in the round in a 25' x 37' black box, while adhering to fire code.
- Two runs: a week workshop in Tuscaloosa (Gallaway Theatre at UA), then a month-long run Off-Broadway (59E59 Theatre).
- Spec'ing equipment we don't have (playback, systems integration, output, mounting hardware) on a limited budget (\$4000).
- Acquiring rights to historical pictures and shooting specific imagery.
- Achieving life-to-video timing synergy while working with evolving components (live actors, changing blocking, composer's music).

INSPIRATION



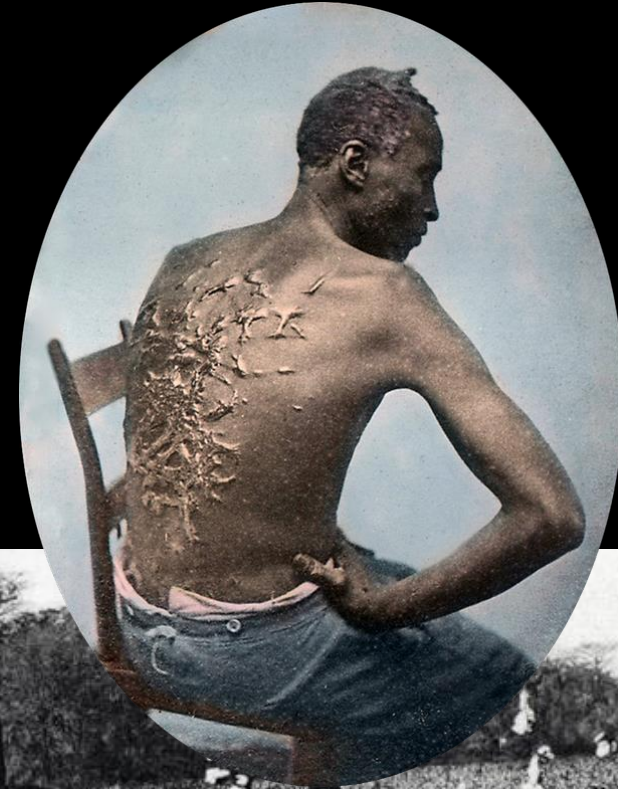
INSPIRATION



INSPIRATION



RESEARCH: ANTEBELLUM



NEGROES FOR SALE.

I will sell by Public Auction, on Tuesday of next Court, being the 29th of November, *Eight Valuable Family Servants*, consisting of one Negro Man, a first-rate field hand, one No. 1 Boy, 17 years of age, a trusty house servant, one excellent Cook, one House-Maid, and one Seamstress. The balance are under 12 years of age. They are sold for no fault, but in consequence of my going to reside North. Also a quantity of Household and Kitchen Furniture, Stable Lot, &c. Terms accommodating, and made known on day of sale.

Jacob August, jr.
P. J. TURNBULL, Auctioneer.

Warrenton, October 28, 1859.

Printed at the News office, Warrenton, North Carolina.



RESEARCH: CIVIL WAR



RESEARCH: CIVIL WAR

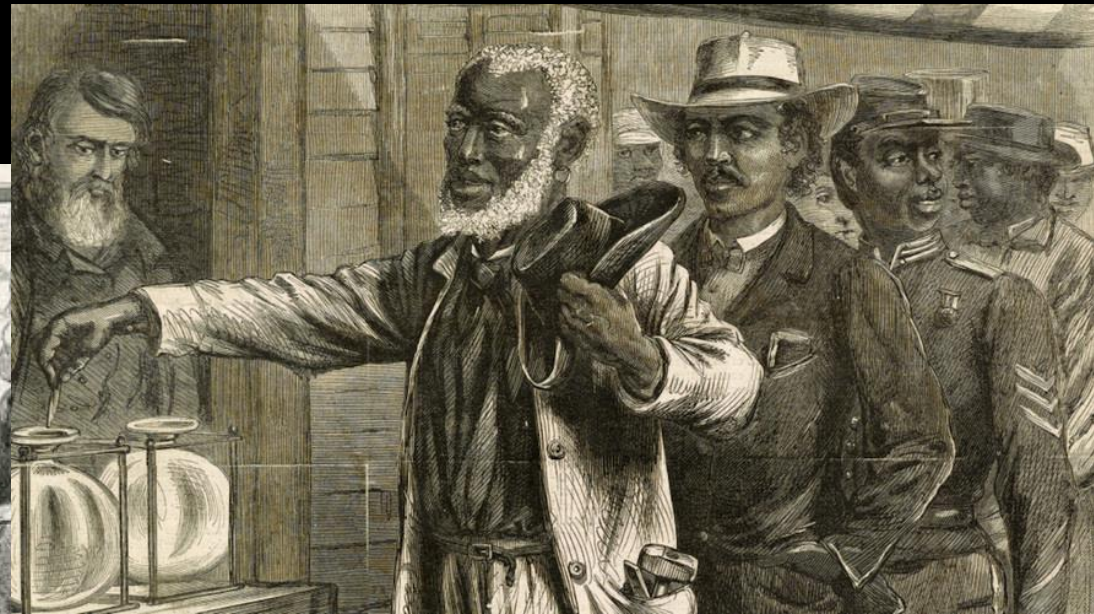


RESEARCH: POLL TAX



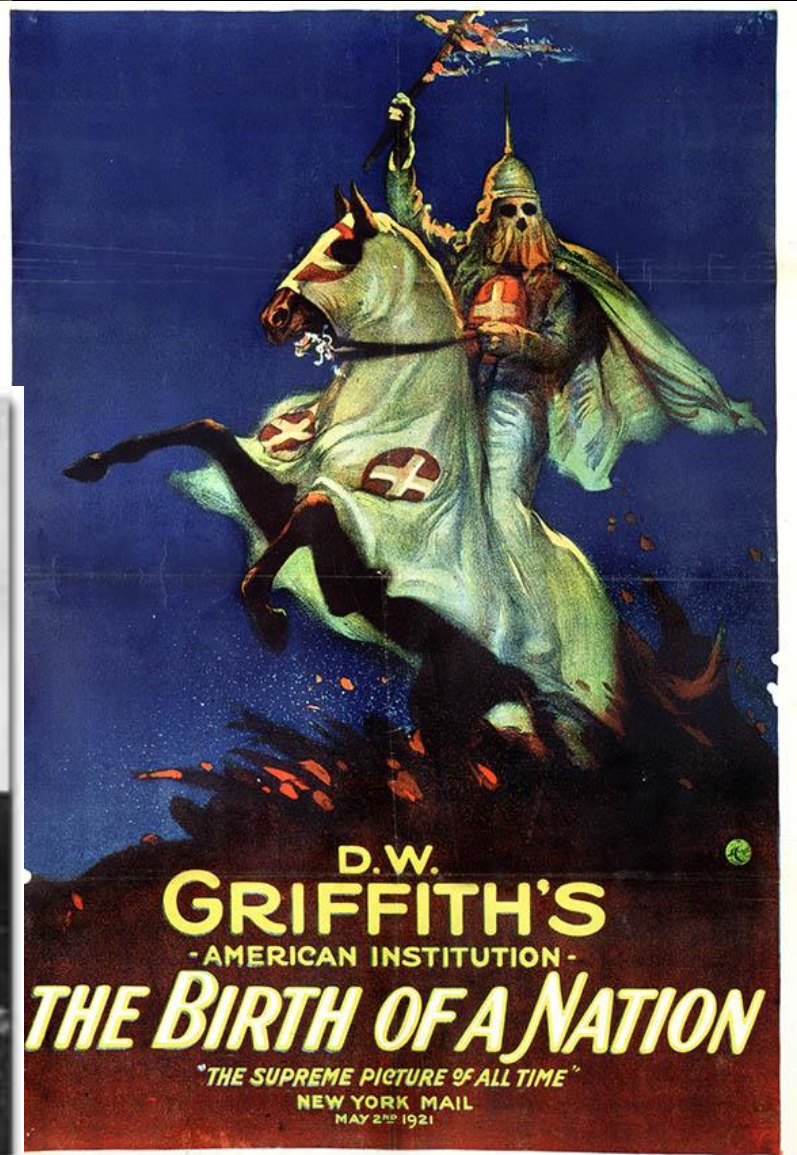
GŁOSOWANIE MURZYNOW W WIRGINII, W STANACH ZJEDNOCZONYCH AMERYKI.

[9248]



THE SOUTHERN STATES—THE WHITE MAN'S TICKET—(See page 11.)

RESEARCH: KKK



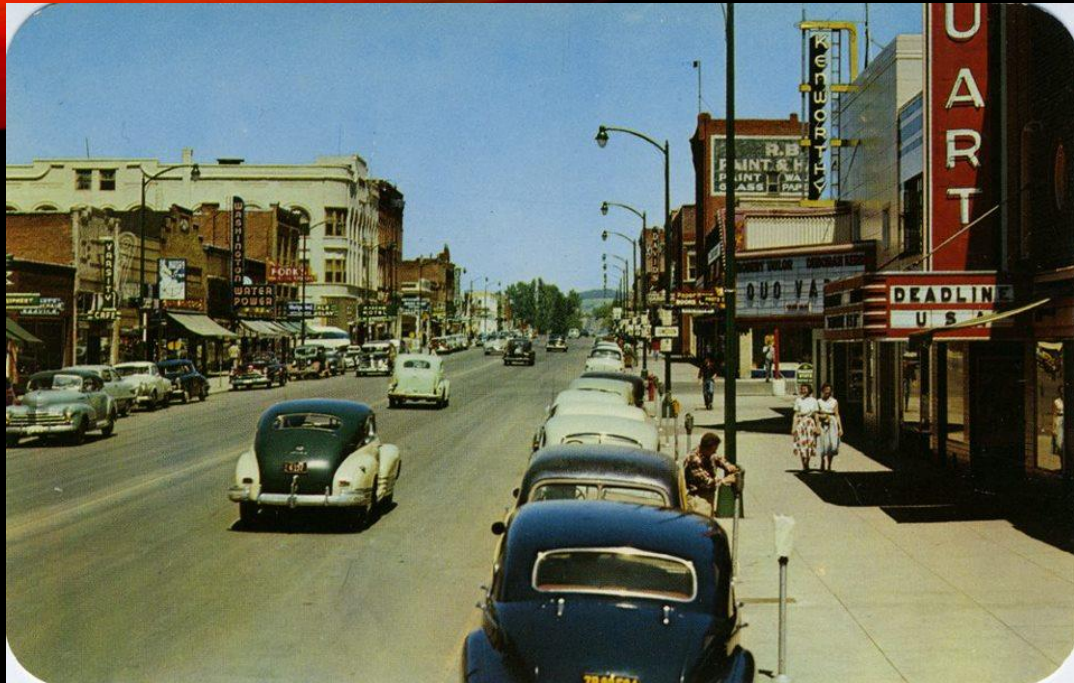
RESEARCH: LYNCHING



SCRIPT-SPECIFIC SHOTS

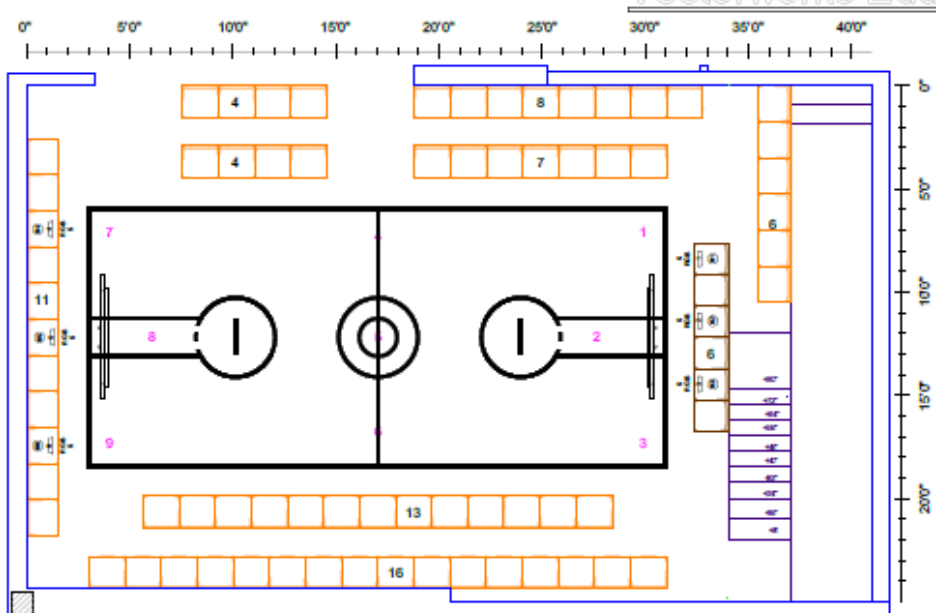


SCRIPT-SPECIFIC SHOTS



SCRIPT-SPECIFIC SHOTS





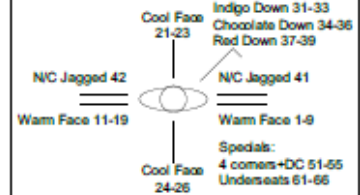
- Propose
- Color
- Field Angle
- Gobo: 1
- Unit Number
- Channel

Inventory

Symbol	Name	#
[Symbol]	7.5in 4 Leaf Barn Door	6
[Symbol]	Chauvet SlimPar 67	6
[Symbol]	ETC Source4 25deg	5
[Symbol]	ETC Source4 30deg	10
[Symbol]	ETC Source4 50deg	10
[Symbol]	ETC Source4 PAR WFL	15

Color Cut List

Color	Frame S#	Cuts
R.312	6.25"	23.00
R.392	7.5"	6.00
R.24	7.5"	3.00
R.59	7.5"	3.00
R.99	7.5"	3.00
N/C	6.25"	2.00
R/GB	N/A	6.00

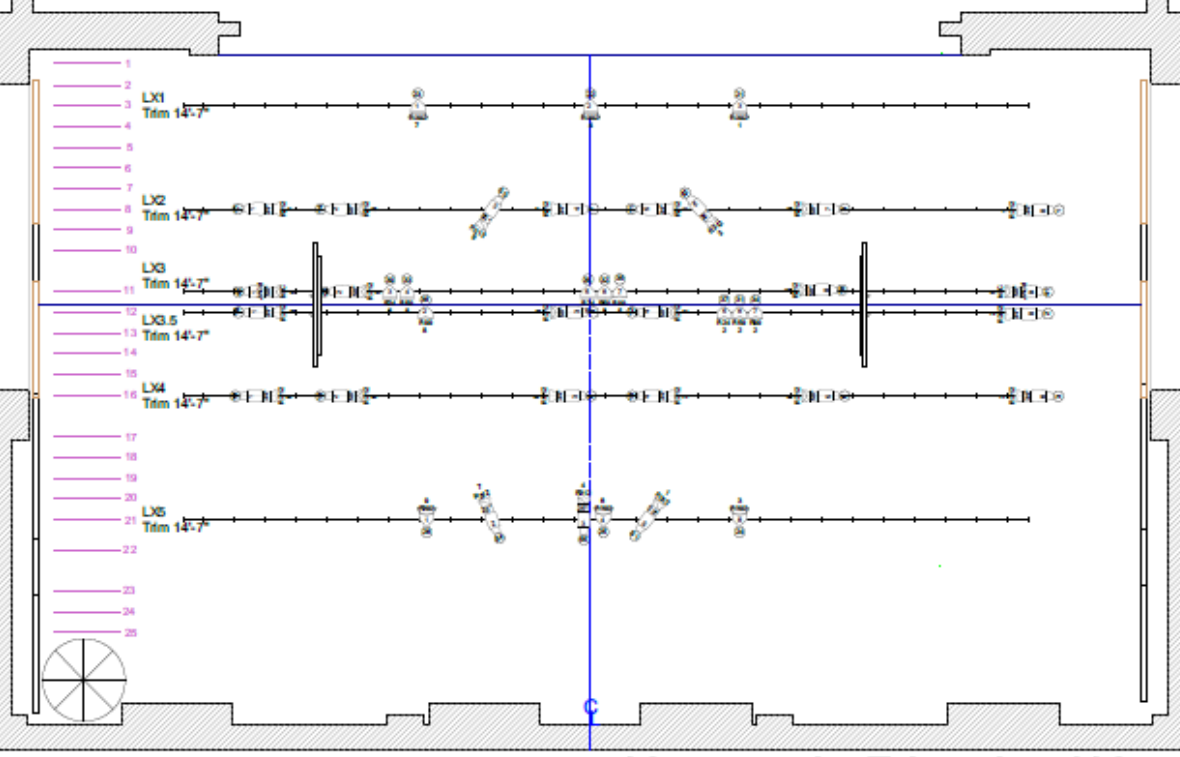


Warm wash: try R312, if no good, then R.11.
Cool: R392, then R66, R70, R65.
Indigo: R59, then R358, R382.
Red: R24, then R26, R27.
All PARs use WFL lenses.
PARs on DS and US walls get barndoors.
6 SlimPARs (from UA) go under seats SL/SR.
Chs 41 & 42 get A-size Backstabbars gobos.

Notes:
Grid 14'-9" to bottom of letter pipes (SL/SR) and top of number pipes (US/DS).
Paint lines are all 2" wide.
Court is 28'-1 3/4" wide by 12'-8 1/2" long (outer edge of boundary).
Half-court circles are 4'OD and 2'OD.
TVs are 10' high to screen center, and 1' from outer edge of boundary; 10 degree tilt down.
Free throw lines are 2" wide, 1'-8" long OC.

Matt Reynolds Separate And Equal 2018-08-09 Channel Hookup

Channel/Name	Instrument Type	Position	Num	Purpose	Color	Gobo 1
1	ETC Source4 35deg	LX2	8	1	R.312	
2	ETC Source4 35deg	LX3.5	8	2	R.312	
3	ETC Source4 35deg	LX4	6	3	R.312	
4	ETC Source4 50deg	LX2	7	4	R.312	
5	ETC Source4 50deg	LX4	5	6	R.312	
7	ETC Source4 35deg	LX2	4	7	R.312	
8	ETC Source4 50deg	LX3.5	3	8	R.312	
9	ETC Source4 35deg	LX4	3	9	R.312	
10	ETC Source4 50deg	LX3	8	5	R.312	
11	ETC Source4 35deg	LX2	5	1	R.312	
12	ETC Source4 50deg	LX3.5	4	2	R.312	
13	ETC Source4 35deg	LX4	4	3	R.312	
14	ETC Source4 50deg	LX2	2	4	R.312	
16	ETC Source4 50deg	LX4	2	6	R.312	
17	ETC Source4 35deg	LX2	1	7	R.312	
18	ETC Source4 35deg	LX3.5	1	8	R.312	
19	ETC Source4 35deg	LX4	1	9	R.312	
20	ETC Source4 50deg	LX3	2	5	R.312	
21	ETC Source4 PAR WFL	LX1	3	1	R.392	Barndoor
22	ETC Source4 PAR WFL	LX1	2	4	R.392	Barndoor
23	ETC Source4 PAR WFL	LX1	1	7	R.392	Barndoor
24	ETC Source4 PAR WFL	LX5	6	3	R.392	Barndoor
25	ETC Source4 PAR WFL	LX5	4	6	R.392	Barndoor
26	ETC Source4 PAR WFL	LX5	1	9	R.392	Barndoor
31	ETC Source4 PAR WFL	LX3.5	6	2	R59	
32	ETC Source4 PAR WFL	LX3	6	5	R59	
33	ETC Source4 PAR WFL	LX3	4	8	R59	
34	ETC Source4 PAR WFL	LX3.5	7	2	R24	
35	ETC Source4 PAR WFL	LX3	7	5	R24	
36	ETC Source4 PAR WFL	LX3.5	2	8	R24	
37	ETC Source4 PAR WFL	LX3.5	5	2	R24	
38	ETC Source4 PAR WFL	LX3	5	5	R24	
39	ETC Source4 PAR WFL	LX3	3	8	R24	
41	ETC Source4 50deg	LX3	9	5	N/C	JAGd
42	ETC Source4 50deg	LX3	1	5	N/C	JAGd
51	ETC Source4 25deg	LX5	5	1	R.312	
52	ETC Source4 25deg	LX2	6	3	R.312	
53	ETC Source4 25deg	LX2	3	9	R.312	
54	ETC Source4 25deg	LX5	2	7	R.312	
55	ETC Source4 25deg	LX5	3	4	R.312	
61	2/1 Chauvet SlimPar 67	DECK	1	5	RGB	
62	2/2 Chauvet SlimPar 67	DECK	2	5	RGB	
63	2/3 Chauvet SlimPar 67	DECK	3	5	RGB	
64	2/4 Chauvet SlimPar 67	DECK	4	5	RGB	
65	2/5 Chauvet SlimPar 67	DECK	5	5	RGB	
66	2/6 Chauvet SlimPar 67	DECK	6	5	RGB	



Warning: This reproduction is for your eyes only. It is not to be used for any other purpose. The reproduction is not to be used for any other purpose. It is not to be used for any other purpose. It is not to be used for any other purpose.

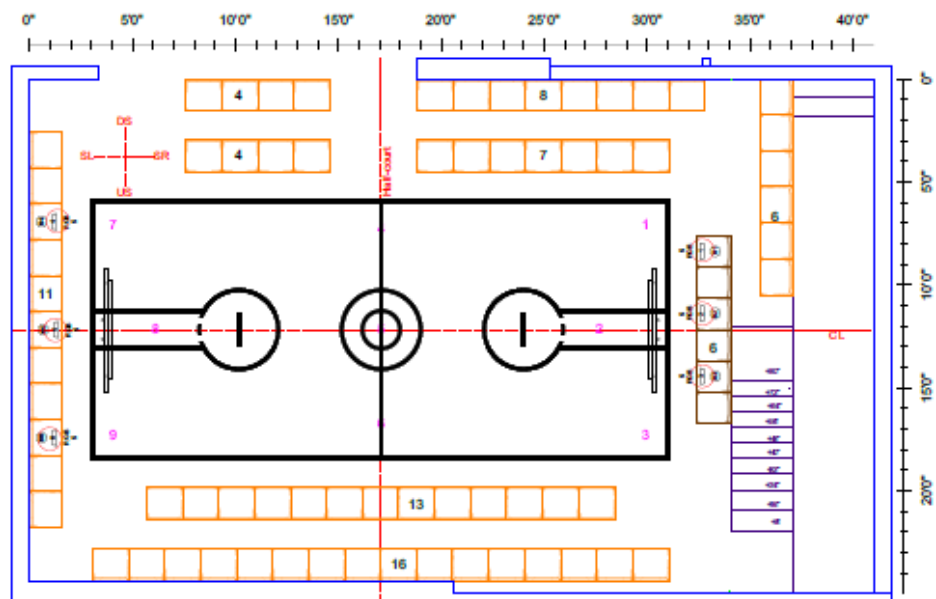


Separate and Equal By Seth Panitch

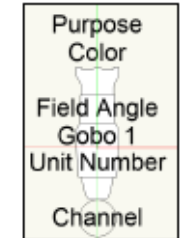
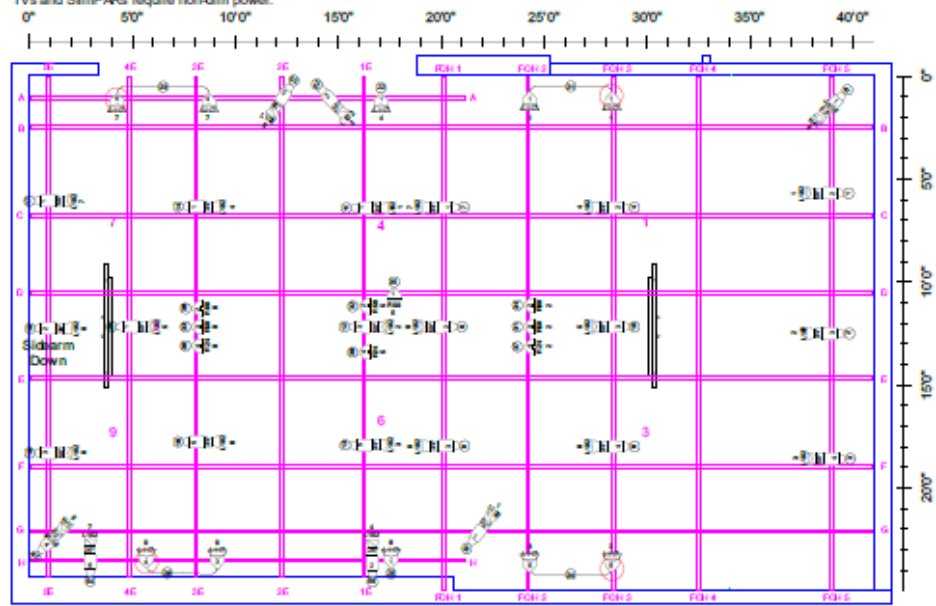
Director: Seth Panitch
Production Design: Matt Reynolds
Custome Design: Tiffany M. Veager
Choreography: Lawrence Jackson
General Manager: Dominic Yearis
Stage Manager: Amanda Harlis
Asst. Stage Manager: Meredith Parr

59E59 THEATERS
Theatre B
59 E. 59 St.
New York City, NY 10022





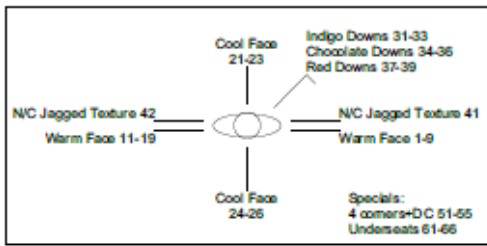
Grid 14'-9" to bottom of letter pipes (SL/SR) and top of number pipes (US/DS).
 Paint lines are all 2" wide.
 Count is 28'-1 3/4" wide by 12'-8 1/2" long (outer edge of boundary).
 Half-out circles are 4'0" and 2'0".
 TVs are 10' high to screen center, 1" from outer edge of nearest boundary, 10 degree tilt down.
 Free throw lines are 2" wide, 1'-8" long OC.
 All outer PARs use WFL lenses. Overstage PARs use XWFL lenses.
 PARs on DS and US walls get bamdoors.
 TVs and SlimPARs require non-dim power.
 Warm wash: by L102; if no good, then R11.
 Cool: L117, then R392, R70, R65.
 Indigo: R59, then R336, R382.
 Red: R24, then R25, R27.
 6 SlimPARs (from UA) go under seats SL/SR.
 Chs 41 & 42 get A-size Backstage bamboos.
 4 SF PARs and 6 SlimPARs come from UA.
 Scale: 1/4" = 1'-0"



- Light**
- Chauvet SlimPar 66 6
 - ETC Source4 26deg 5
 - ETC Source4 36deg 10
 - ETC Source4 50deg 10
 - ETC Source4 PAR WFL 10
 - ETC Source4 PAR XWFL 9
- Static Accessory**
- 7.5h 4 Leaf Bam Door 10

Color Summary

Color	Size	Count
L102	6.25"	23
L117	7.5"	10
N/C	6.25"	2
R24	7.5"	3
R36	7.5"	3
R38	7.5"	3
R39	7.5"	3
R/B	N/A	6



Reynolds Separate And Equal Channel Hookup 2018-08-27

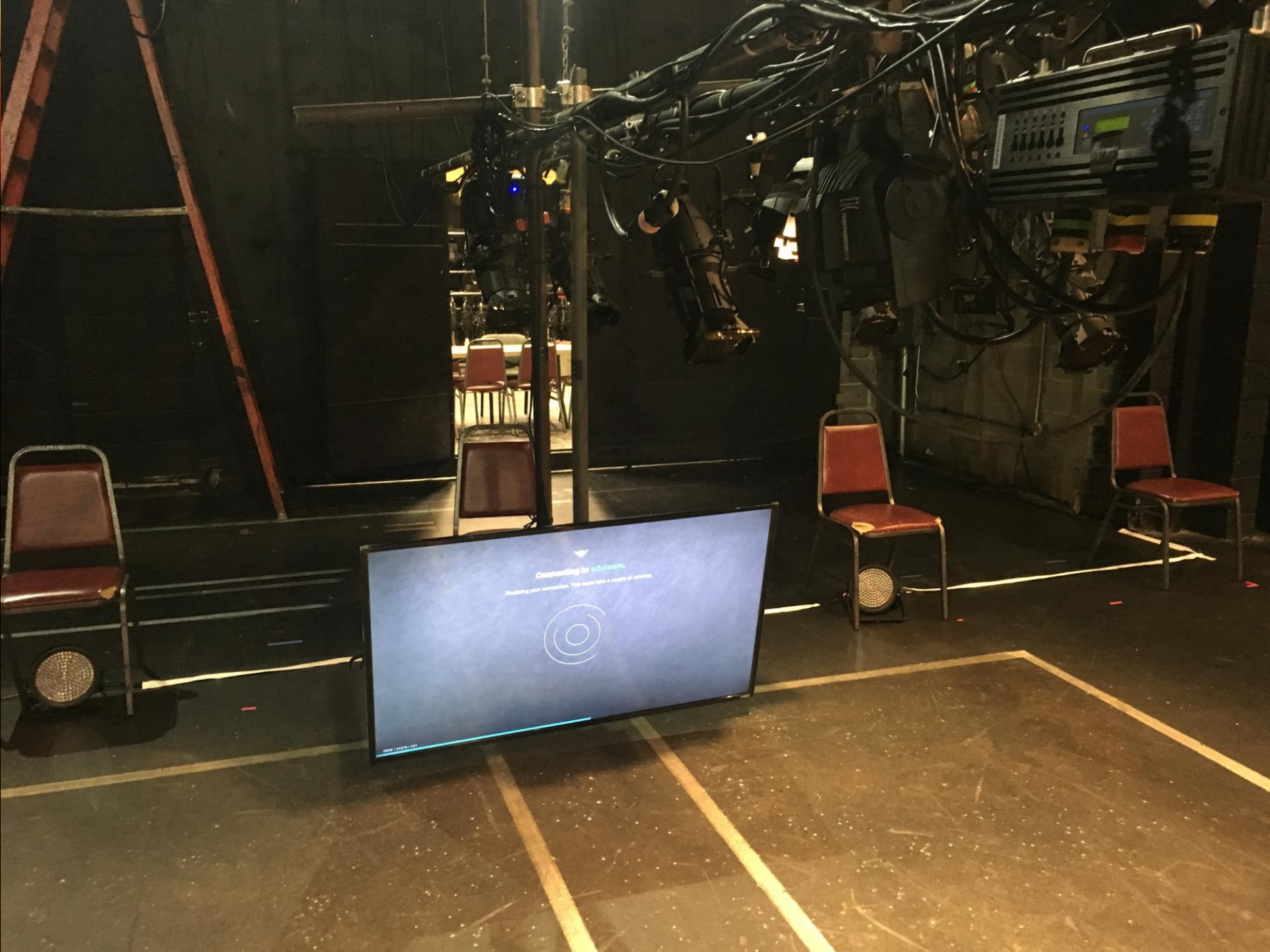
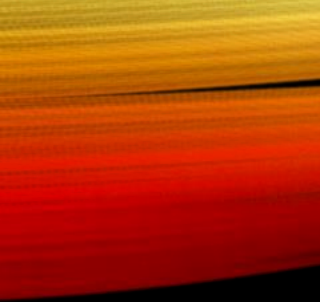
Channel/Line	Instrument Type	Position	Num	Purpose	Color	Gobo 1
1	ETC Source4 50deg	POH5	2	1	L102	
2	ETC Source4 36deg	POH5	3	2	L102	
3	ETC Source4 50deg	POH5	4	3	L102	
4	ETC Source4 36deg	POH5	2	4	L102	
5	ETC Source4 36deg	POH5	4	5	L102	
6	ETC Source4 36deg	POH5	4	6	L102	
7	ETC Source4 36deg	1E	1	7	L102	
8	ETC Source4 50deg	1E	2	8	L102	
9	ETC Source4 36deg	1E	3	9	L102	
10	ETC Source4 50deg	POH5	3	5	L102	
11	ETC Source4 36deg	1E	1	1	L102	
12	ETC Source4 50deg	1E	3	2	L102	
13	ETC Source4 36deg	1E	5	3	L102	
14	ETC Source4 36deg	1E	1	4	L102	
16	ETC Source4 36deg	3E	5	6	L102	
17	ETC Source4 50deg	5E	1	7	L102	
18	ETC Source4 36deg	5E	2	8	L102	
19	ETC Source4 50deg	5E	3	9	L102	
20	ETC Source4 50deg	4E	1	5	L102	
21	ETC Source4 PAR WFL	POH5	1	1	L117	Bamdoor
22	ETC Source4 PAR WFL	POH2	1	1	L117	Bamdoor
23	ETC Source4 PAR WFL	A	1	4	L117	Bamdoor
23	ETC Source4 PAR WFL	A	5	7	L117	Bamdoor
23	ETC Source4 PAR WFL	A	4	7	L117	Bamdoor
24	ETC Source4 PAR WFL	POH5	5	3	L117	Bamdoor
24	ETC Source4 PAR WFL	POH2	5	3	L117	Bamdoor
25	ETC Source4 PAR WFL	H	1	6	L117	Bamdoor
26	ETC Source4 PAR WFL	H	4	9	L117	Bamdoor
26	ETC Source4 PAR WFL	H	3	9	L117	Bamdoor
31	ETC Source4 PAR XWFL	POH2	3	2	R59	
32	ETC Source4 PAR XWFL	1E	2	5	R59	
33	ETC Source4 PAR XWFL	3E	3	8	R59	
34	ETC Source4 PAR XWFL	POH2	2	2	R59	
35	ETC Source4 PAR XWFL	D	1	5	R59	
36	ETC Source4 PAR XWFL	3E	2	8	R59	
37	ETC Source4 PAR XWFL	POH2	4	2	R24	
38	ETC Source4 PAR XWFL	1E	4	5	R24	
39	ETC Source4 PAR XWFL	3E	4	8	R24	
41	ETC Source4 50deg	POH5	1	5	N/C	JAGd
42	ETC Source4 50deg	5E	4	5	N/C	JAGd
51	ETC Source4 26deg	F	1	1	L102	
52	ETC Source4 26deg	A	2	3	L102	
53	ETC Source4 26deg	A	3	9	L102	
54	ETC Source4 26deg	H	5	7	L102	
55	ETC Source4 26deg	F	2	4	L102	
61	211 Chauvet SlimPar 67	DECK	1	5	R/B	
62	221 Chauvet SlimPar 67	DECK	2	5	R/B	
63	231 Chauvet SlimPar 67	DECK	3	5	R/B	
64	241 Chauvet SlimPar 67	DECK	4	5	R/B	
65	251 Chauvet SlimPar 67	DECK	5	5	R/B	
66	261 Chauvet SlimPar 67	DECK	6	5	R/B	

Production is completed. No reproduction or reuse of these drawings is permitted without written consent of the designer. Vectorworks overwrites scale in case of conflicting information. Responsibility falls on the vendor to verify the designer's any discrepancies between his drawing and actual dimensions. The designer's journal represents concepts and suggestions only. The designer is not responsible for the final implementation of the design. The design must be approved by a qualified engineer prior to installation, and must also be approved by qualified personnel only. Equipment and materials must comply with applicable local, state, and federal codes and regulations (NEC, OSHA, IBC, ADA, etc.).

THE UNIVERSITY OF ALABAMA
College of Arts & Sciences
Department of Theatre and Dance

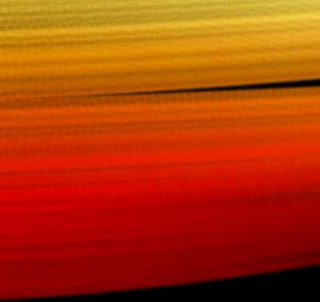
Separate and Equal By Seth Panitch
 Director: Seth Panitch
 Production Design: Mark Reynolds
 Costume Design: Tiffany M. Yeager
 Choreography: Lawrence Jackson
 General Manager: Dominic Yeager
 Stage Manager: Amanda Harris
 Asst. Stage Manager: Meredith Parr

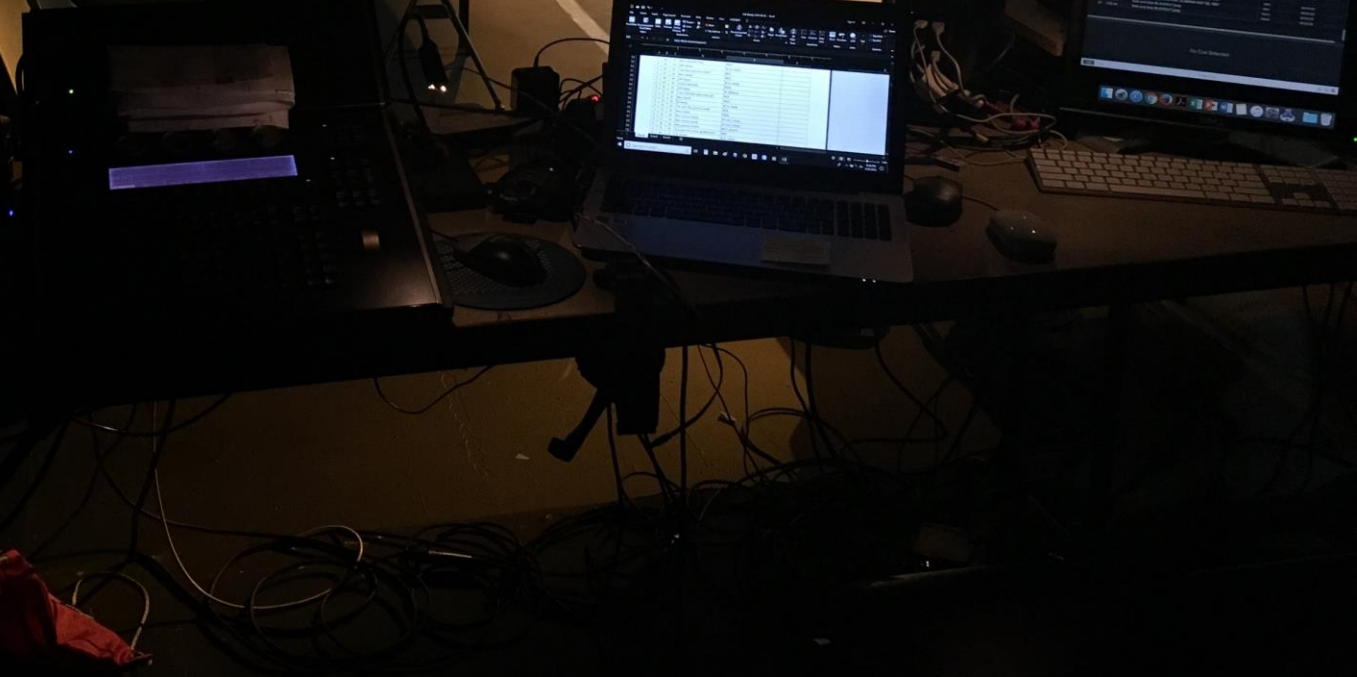
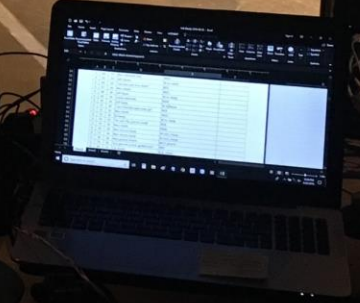
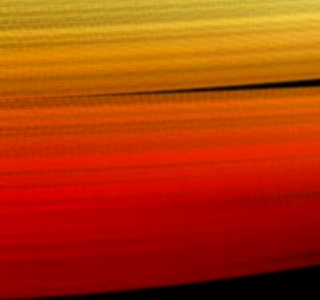
Light Plot Phase: 1/1
 Scale: 1/4" = 1'-0"
 Date: 2018-08-27
 59E59 THEATERS
 Theatre B
 59 E 59 St.
 New York City, NY 10022



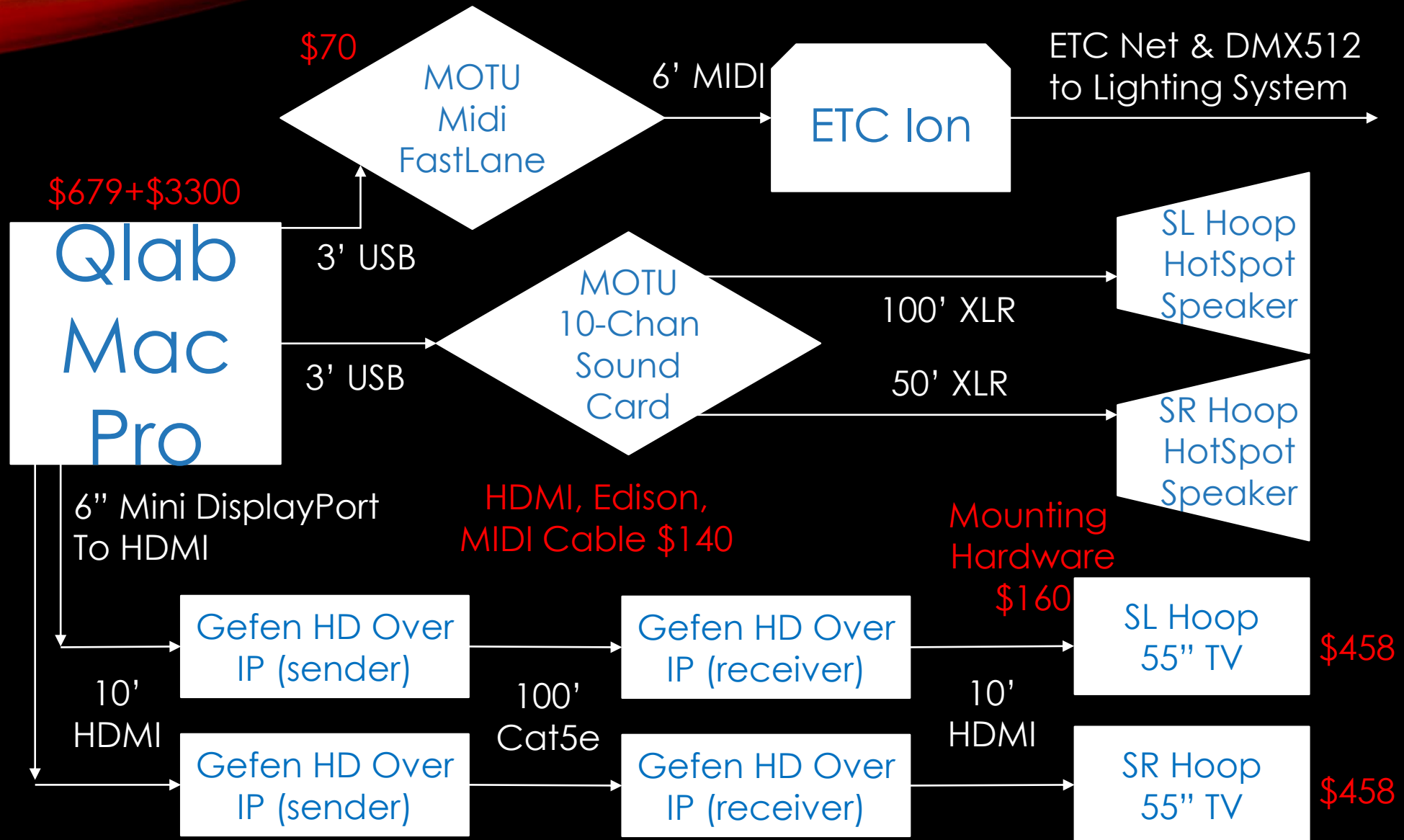
Connecting to adroom.
Preparing your connection. This will take a minute or so.







INTEGRATED SYSTEM DESIGN



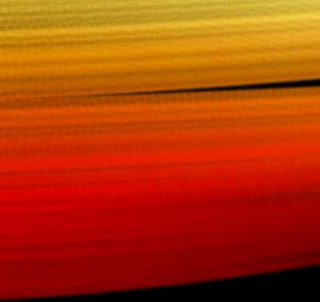


























SEPARATE AND EQUAL

Video Design